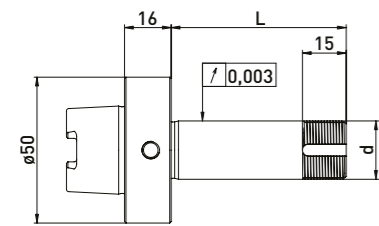
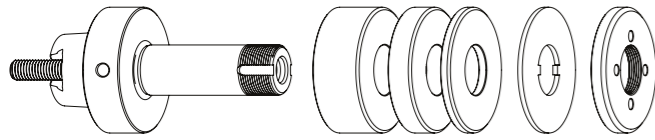


Strausak similar HSK50 // Shaft $\varnothing 20$ mm // RS $\varnothing 50$ mm

For Strausak Promat tool grinding machines for Ring set $\varnothing 50$ mm

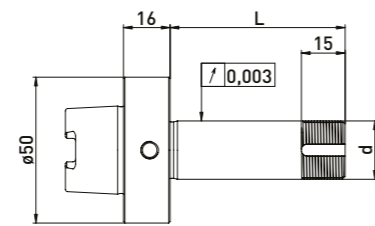
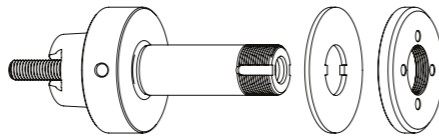
GWA similar HSK50 // $\varnothing 20$ mm // RS $\varnothing 50$ mm



Delivered equipped:
Ring set $\varnothing 50$ mm, lock washer, clamping nut and tightening screw

Order No.	Taper	d	L	Ring set $\varnothing 50$ mm		
				B20	B10	B4
300062032	similar HSK50	20	60	1	1	4

GWA similar HSK50 // $\varnothing 20$ mm // without RS



Delivered equipped:
Lock washer, clamping nut and tightening screw

Order No.	Taper	d	L
300062031	similar HSK50	20	60

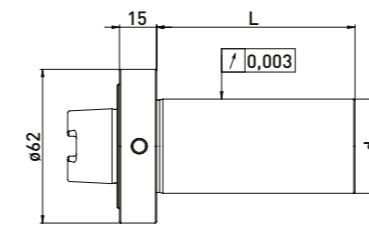
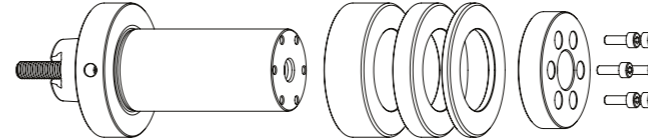
Accessories Strausak Promat grinding wheel adapter similar HSK50 // Shaft $\varnothing 20$ mm // Ring set $\varnothing 50$ mm

Order No.	Name	Order No.	Name
350050010	Universal assembly device $\varnothing 50$	350011020	Spacer ring $\varnothing 50 \times \varnothing 20 \times 20$
350040010	*Clamping nut wrench PC27 for $\varnothing 20$	350011010	Spacer ring $\varnothing 50 \times \varnothing 20 \times 10$
350040011	*Clamping nut wrench PC27 for $\varnothing 20$	350011004	Spacer ring $\varnothing 50 \times \varnothing 20 \times 4$
350020021	*Balancing weight pair for clamping nut $\varnothing 50 // 100$ gmm	350015003	Support washer $\varnothing 50 \times \varnothing 75 \times \varnothing 20 \times 6$
		350030010	Lock washer $\varnothing 50 \times \varnothing 20 \times 2$
		350020060	Clamping nut $\varnothing 50 \times 6 \times M20 \times 1$ PC27
		350020020	*Clamping nut with balancing option $\varnothing 50 \times 8,5 M20 \times 1,0$ PC27

Strausak similar HSK50 // Shaft $\varnothing 38$ mm // RS $\varnothing 62$ mm

For Strausak Promat tool grinding machines with ring set $\varnothing 62$ mm

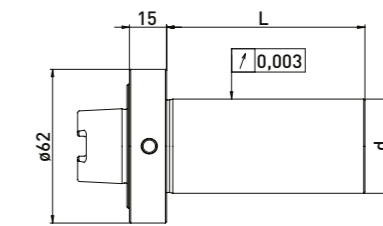
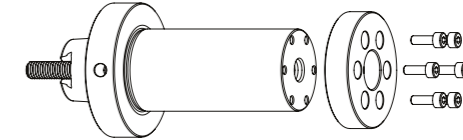
GWA similar HSK50 // $\varnothing 38$ mm // RS $\varnothing 62$ mm



Delivered equipped:
Ring set $\varnothing 62$ mm, clamping flange, 4pc. allen screw and tightening screw

Order No.	Taper	d	L	Ring set $\varnothing 62$ mm		
				B20	B10	B4
300062332	similar HSK50	38	80	2	2	4

GWA similar HSK50 // $\varnothing 38$ mm // without RS



Delivered equipped:
Clamping flange, 4pc. allen screw and tightening screw

Order No.	Taper	d	L
300062331	similar HSK50	38	80

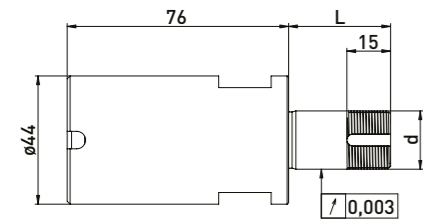
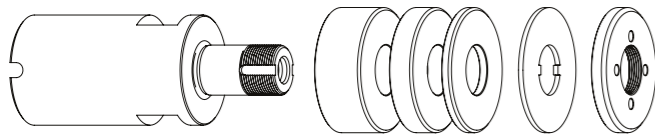
Accessories Strausak Promat grinding wheel adapter similar HSK50 // Shaft $\varnothing 38$ mm // Ring set $\varnothing 62$ mm

Order No.	Name	Order No.	Name
350050040	Assembly device Strausak $\varnothing 62$	350013320	Spacer ring $\varnothing 62 \times \varnothing 38 \times 20$
		350013310	Spacer ring $\varnothing 62 \times \varnothing 38 \times 10$
		350013304	Spacer ring $\varnothing 62 \times \varnothing 38 \times 4$
		350020040	Clamping flange $\varnothing 54 \times 12$

Strausak Internal taper // Shaft $\varnothing 20\text{mm}$ // RS $\varnothing 50\text{ mm}$

For Strausak Fleximat tool grinding machines with ring set $\varnothing 50\text{ mm}$

GWA Strausak Internal taper // $\varnothing 20\text{mm}$ // RS $\varnothing 50\text{ mm}$

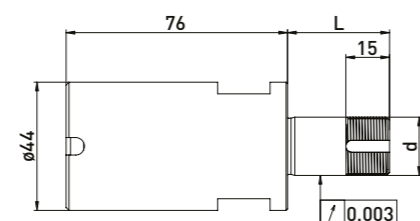
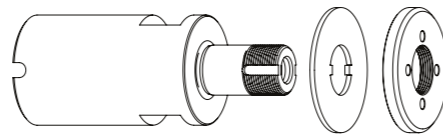


Delivered equipped:

Ring set $\varnothing 50\text{ mm}$, lock washer, clamping nut and clamping screw

Order No.	Internal taper	d	L	Ring set $\varnothing 50\text{ mm}$		
				B20	B10	B4
300063012	Strausak	20	35	-	1	3
300063022	Strausak	20	60	1	1	4

GWA Strausak Internal taper // $\varnothing 20\text{mm}$ // without RS



Delivered equipped:

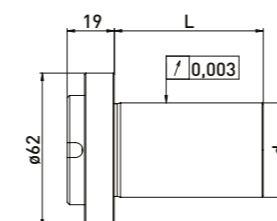
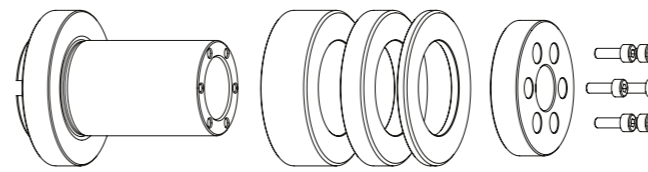
Lock washer, clamping nut and clamping screw

Order No.	Internal taper	d	L
300063011	Strausak	20	35
300063021	Strausak	20	60

Strausak Internal taper // Shaft $\varnothing 38\text{mm}$ // RS $\varnothing 62\text{ mm}$

For Strausak Fleximat tool grinding machines with ring set $\varnothing 62\text{ mm}$

GWA Strausak Internal taper // $\varnothing 38\text{mm}$ // RS $\varnothing 62\text{ mm}$

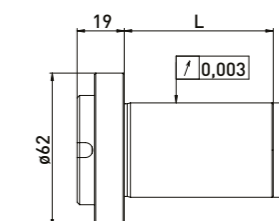
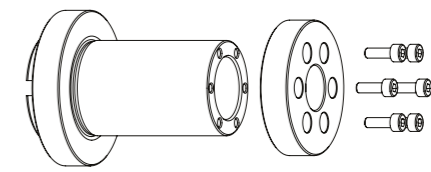


Delivered equipped:

Ring set $\varnothing 62\text{ mm}$, clamping flange, allen screw 4pc. and tightening screw

Order No.	Internal taper	d	L	Ring set $\varnothing 62\text{ mm}$		
				B20	B10	B4
300063332	Strausak	38	60	1	2	4

GWA Strausak Internal taper // $\varnothing 38\text{ mm}$ // without RS



Delivered equipped:

clamping flange, allen screw 4pc. and tightening screw

Order No.	Internal taper	d	L
300063331	Strausak	38	60

Accessories Strausak Fleximat grinding wheel adapter Strausak Internal taper // Shaft $\varnothing 20\text{ mm}$ // Ring set $\varnothing 50\text{ mm}$

Order No.	Name	Order No.	Name
350050010	Universal assembly device $\varnothing 50$	350011020	Spacer ring $\varnothing 50 \times \varnothing 20 \times 20$
350015007	Adapter sleeve Strausak clamping diameter $\varnothing 44$ [Reduction for Strausak $\varnothing 44 \times \varnothing 50$ for universal assembly device]	350011010	Spacer ring $\varnothing 50 \times \varnothing 20 \times 10$
350040010	*Clamping nut wrench PC27 for $\varnothing 20$	350011004	Spacer ring $\varnothing 50 \times \varnothing 20 \times 4$
350040011	*Clamping nut wrench PC27 for $\varnothing 20$	350030010	Lock washer $\varnothing 50 \times \varnothing 20 \times 2$
350020021	*Balancing weight pair for clamping nut $\varnothing 50 // 100\text{gmm}$	350020060	Clamping nut $\varnothing 50 \times 6 \times \text{M}20 \times 1 \text{ PC}27$
		350020020	*Clamping nut with balancing option $\varnothing 50 \times 8,5 \text{ M}20 \times 1,0 \text{ PC}27$

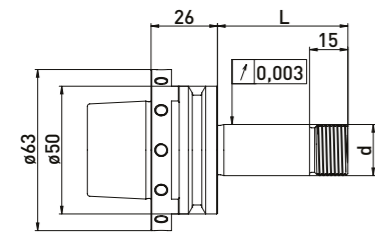
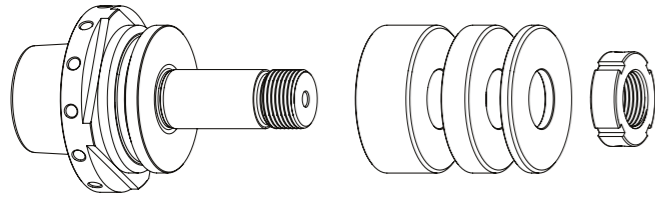
Accessories Strausak Fleximat grinding wheel adapter Strausak Internal taper // Shaft $\varnothing 38\text{ mm}$ // Ring set $\varnothing 62\text{mm}$

Order No.	Name	Order No.	Name
350050040	Assembly device Strausak $\varnothing 62$	350013320	Spacer ring $\varnothing 62 \times \varnothing 38 \times 20$
		350013310	Spacer ring $\varnothing 62 \times \varnothing 38 \times 10$
		350013304	Spacer ring $\varnothing 62 \times \varnothing 38 \times 4$
		350020040	Clamping flange $\varnothing 54 \times 12$

Strausak HSK-E50 // Shaft $\varnothing 20$ mm // RS $\varnothing 50$ mm

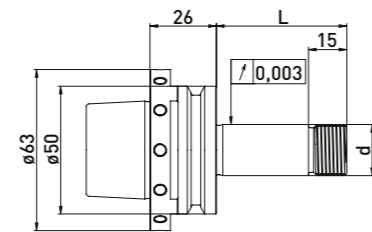
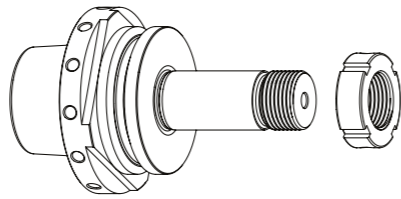
For Strausak tool grinding machines with ring set $\varnothing 50$ mm

GWA HSK-E50 // $\varnothing 20$ mm // RS $\varnothing 50$ mm



Delivered equipped:
Ring set $\varnothing 50$ mm and clamping nut

GWA HSK-E50 // $\varnothing 20$ mm // without RS



Delivered equipped:
Clamping nut

Ring set $\varnothing 50$ mm

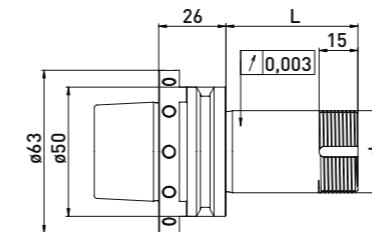
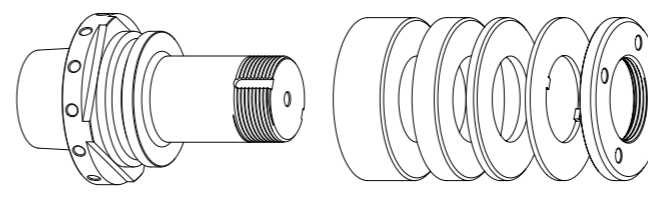
Order No.	HSK	d	L	B20	B10	B4
300150612	HSK-50	20	51	1	1	2
300150632	HSK-50	20	81	2	2	2

Order No.	HSK	d	L
300150611	HSK-50	20	51
300150631	HSK-50	20	81

Strausak HSK-E50 // Shaft $\varnothing 31,75$ mm (1¼) // RS $\varnothing 60$ mm

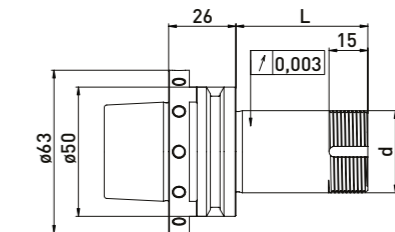
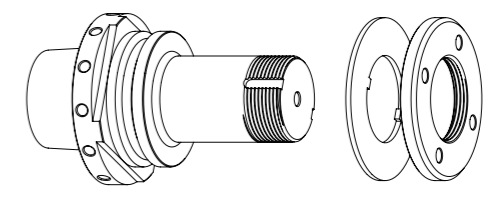
For Strausak tool grinding machines with ring set $\varnothing 60$ mm

GWA HSK-E50 // $\varnothing 31,75$ mm // RS $\varnothing 60$ mm



Delivered equipped:
Ring set $\varnothing 60$ mm, lock washer and clamping nut

GWA HSK-E50 // $\varnothing 31,75$ mm // without RS



Delivered equipped:
Lock washer and clamping nut

Ring set $\varnothing 60$ mm

Order No.	HSK	d	L	B20	B10	B4
300150712	HSK-50E	31,75	51	-	1	3
300150732	HSK-50E	31,75	81	1	1	3

Order No.	HSK	d	L
300150711	HSK-50E	31,75	51
300150731	HSK-50E	31,75	81

Accessories Strausak grinding wheel adapter HSK-E50 // Shaft $\varnothing 20$ mm // Ring set $\varnothing 50$ mm

Order No.	Name	Order No.	Name
350040051	Hook wrench 30 - 32 mm	350011520	Spacer ring Rollomatic $\varnothing 50 \times \varnothing 20 \times 20$
		350011510	Spacer ring Rollomatic $\varnothing 50 \times \varnothing 20 \times 10$
		350011504	Spacer ring Rollomatic $\varnothing 50 \times \varnothing 20 \times 4$
		350020121	Clamping nut MRR20 x 1,5 M20 x 1,5 $\varnothing 32 \times 10$
		350015003	Support washer $\varnothing 50 \times \varnothing 75 \times \varnothing 20 \times 6$

Accessories Strausak grinding wheel adapter HSK-E50 // $\varnothing 31,75$ mm (1¼) // Ring set $\varnothing 60$ mm

Order No.	Name	Order No.	Name
350040030	*Clamping nut wrench PC39 for clamping nut with blancing option	350011420	Spacer ring $\varnothing 60 \times \varnothing 31,75 \times 20$
350040020	Clamping nut wrench PC45 for $\varnothing 32$	350011410	Spacer ring $\varnothing 60 \times \varnothing 31,75 \times 10$
350020023	*Balancing weight pair for clamping nut $\varnothing 60$ // 200gmm	350011404	Spacer ring $\varnothing 60 \times \varnothing 31,75 \times 4$
		350030060	Lock washer $\varnothing 60 \times \varnothing 32 \times 1,8$
		350020066	Clamping nut $\varnothing 60 \times 6 \times M32 \times 1,5$ PC45
		350020022	*Clamping nut with balancing option $\varnothing 60 \times 9$ M32 x 1,5 PC39