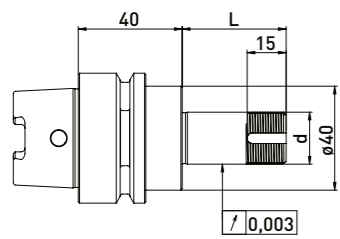
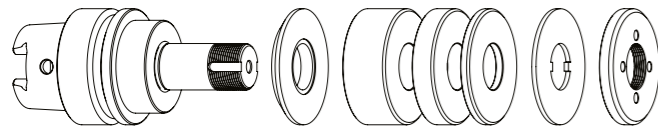


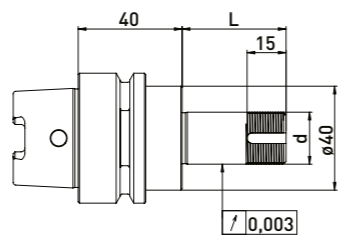
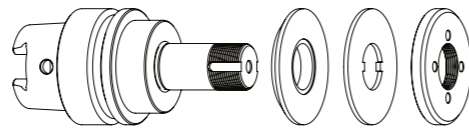
Zaro 磨刀機專用，搭配間隔環 RS  $\phi 50$  毫米

HSK50 //  $\phi 20$  毫米 // RS  $\phi 50$  毫米



交付設備  
縮小墊圈, 間隔環  $\phi 50$  毫米, 鎖緊墊圈, 鎖緊螺帽

HSK50 //  $\phi 20$  毫米 // 不交付間隔環



交付設備  
縮小墊圈, 鎖緊墊圈, 鎖緊螺帽

間隔環  $\phi 50$  毫米

訂單號	HSK	d	L	B20	B10	B4
300112012	HSK50	20	40	-	1	3
300112022	HSK50	20	60	1	1	3
300112032	HSK50	20	75	1	2	4
300112042	HSK50	20	85	2	1	4
300112052	HSK50	20	100	2	3	3

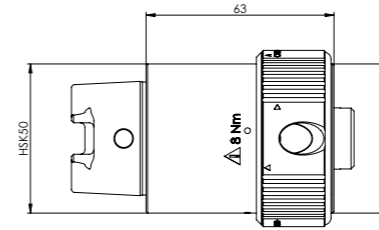
訂單號	HSK	d	L
300112011	HSK50	20	40
300112021	HSK50	20	60
300112031	HSK50	20	75
300112041	HSK50	20	85
300112051	HSK50	20	100

配件 Zaro 專用砂輪連桿 HSK50 // 柄徑  $\phi 20$  毫米 // 間隔環  $\phi 50$  毫米

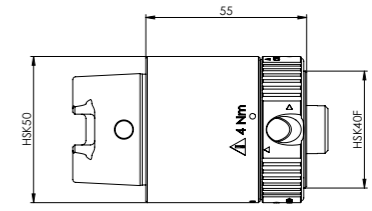
訂單號	名稱
350050010	通用組裝設備 $\phi 50$
350040010	鎖緊螺帽扳手 齒節圓27 適用於鎖緊螺帽 $\phi 20$
350040011	鎖緊螺帽扳手 齒節圓27 適用於鎖緊螺帽 $\phi 20$
350020021	*DS 鎖緊螺帽專用動平衡滑塊 $\phi 50 // 100\text{gmm}$

訂單號	名稱
350011020	間隔環 $\phi 50 \times \phi 20 \times 20$
350011010	間隔環 $\phi 50 \times \phi 20 \times 10$
350011004	間隔環 $\phi 50 \times \phi 20 \times 4$
350015002	縮小墊圈 $\phi 40 \times \phi 50 \times \phi 20 \times 6$
350030010	鎖緊墊圈 $\phi 50 \times \phi 20 \times 2$
350020060	鎖緊螺帽 $\phi 50 \times 6 \times \text{M}20 \times 1$ 齒節圓27
350020020	*GDS 動平衡螺帽 $\phi 50 \times 8,5 \text{ M}20 \times 1,0$ 齒節圓27

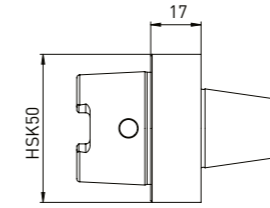
所有變徑襯套經過動平衡處理G1.6



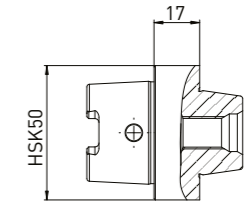
訂單號	名稱
350130020	HSK50轉 HSK40 A/C/E 與 HSK50 B/D/F



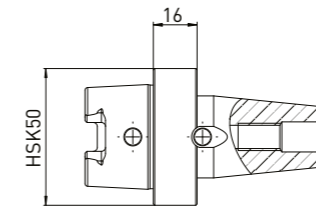
訂單號	名稱
350130021	HSK50轉 HSK32 A/C/E 與 HSK40 B/D/F



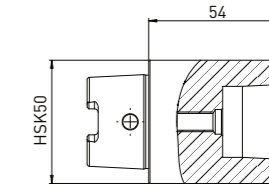
訂單號	名稱
350130034	HSK50轉 ANCA內錐 $\phi 30$



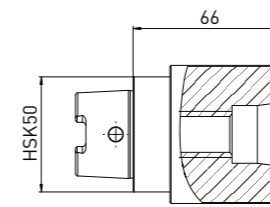
訂單號	名稱
350130032	HSK50轉 Haas/Walter專用內錐



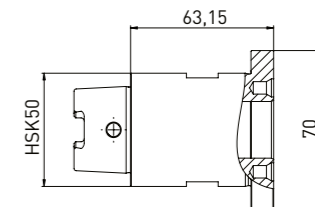
訂單號	名稱
350130030	HSK50轉 Strausak內錐 (Fleximat)



訂單號	名稱
350130031	HSK50轉 Strausak內錐 (Promat)

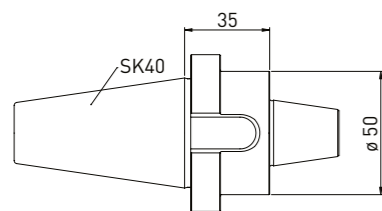


訂單號	名稱
350130033	HSK50轉 Saacke短錐

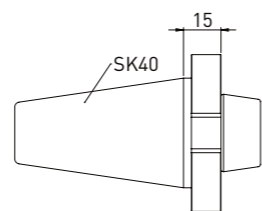


訂單號	名稱
350130048	HSK50轉 $\times \phi 25$ Rollomatic 心軸

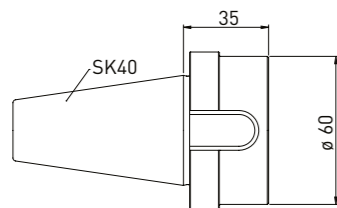
所有變徑襯套經過動平衡處理G1.6



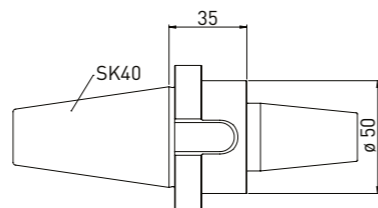
350130035 SK40轉 ANCA內錐 $\phi$ 30



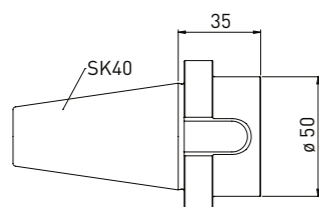
350130014 SK40轉 Haas/Walter專用內錐



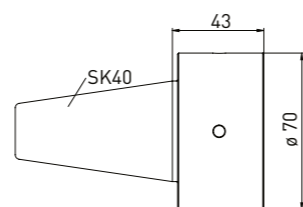
350130040 SK40轉 Saacke短錐



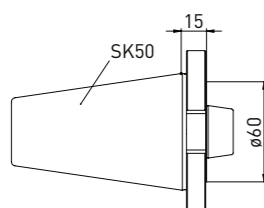
350130043 SK40轉 Strausak 內錐 (Fleximat)



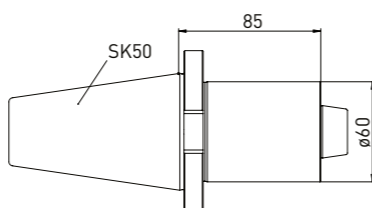
350130042 SK40轉 Strausak內錐 (Promat)



350130039 SK40轉 Rollomatic 心軸25

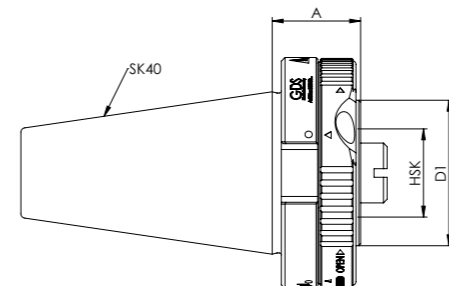


350130044 SK50轉 Haas/Walter內錐 L15



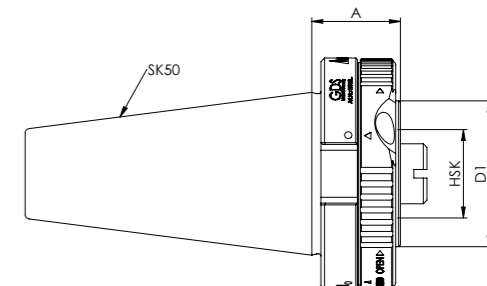
350130045 SK50轉 Haas/Walter內錐 L85

SK40轉HSK系列



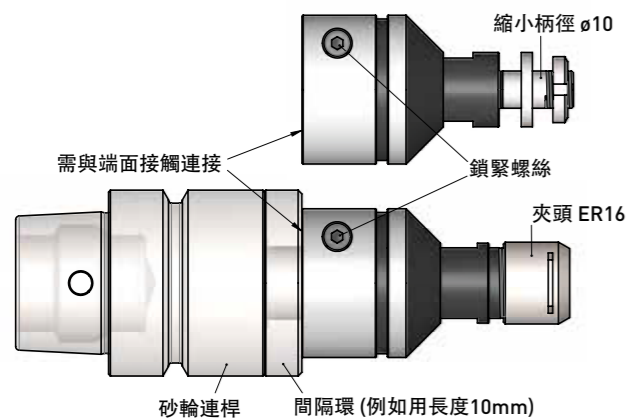
訂單號	HSK-A/C/E	HSK-B/D/F	A	D1
350130011	HSK32	HSK40	25	40
350130012	HSK40	HSK50	35	50
350130013	HSK50	HSK63	45	63

SK50轉HSK系列



訂單號	HSK-A/C/E	HSK-B/D/F	A	D1
350130001	HSK32	HSK40	30	40
350130002	HSK40	HSK50	33	50
350130003	HSK50	HSK63	45	63

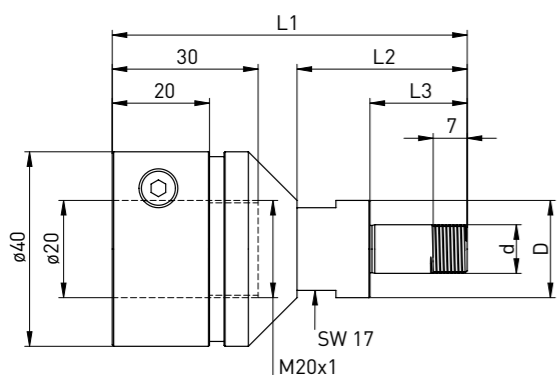
砂輪連桿套上去的縮小外徑專用襯套  
柄徑  $\phi 20$  轉  $\phi 10$  // 柄徑  $\phi 20$  轉 ER16 筒夾



使用說明:

縮小外徑襯套的內孔帶 M20x1 螺紋，鎖上砂輪連桿時背面需與砂輪連桿端面接觸連接。如不能鎖到底請用間隔環來控制長度！隨後把襯套側邊的螺絲鎖緊固好。

襯套  $\phi 20$  轉  $\phi 10$



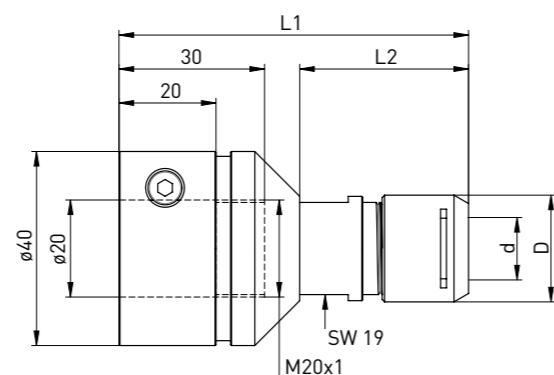
交付設備  
鎖緊螺帽 (350020114), 間隔環 (350016004)

訂單號	D	d	L1	L2	L3
350130046	20	10	73	35	20

襯套配件

訂單號	名稱 - $\phi$
350016004	間隔環 $\phi 20 \times \phi 10 \times 3$
350020114	鎖緊螺帽 $\phi 18 \times 4 - M10 \times 0,75$
350040050	鎖緊扳手 16-20 mm

襯套  $\phi 20$  轉 ER16



交付設備  
迷你鎖緊螺帽 (350020116)

訂單號	D	d	L1	L2
350130047	22	ER16	73	62

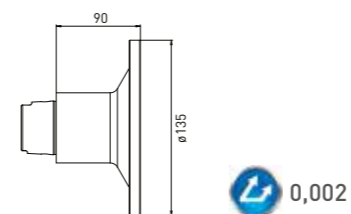
襯套配件

訂單號	名稱
350125116	迷你螺帽 ER16
350126116	專用扳手 ER16

訂單號	名稱
3501217**	筒夾 DIN 6499 ER16 ** $\phi 1-10$ mm

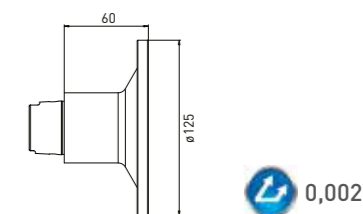
\*\*需提供完整訂購要求如 ER16  $\phi 8$ mm 轉換為編號 (350121608)

HSK50測試角度盤



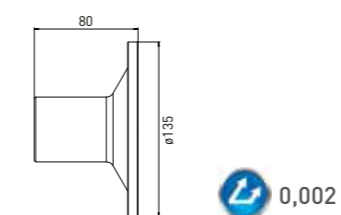
訂單號	名稱
350090010	HSK50測試角度盤

HSK40測試角度盤



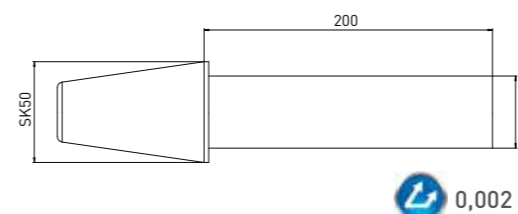
訂單號	名稱
350090020	HSK40測試角度盤

NCT測試角度盤



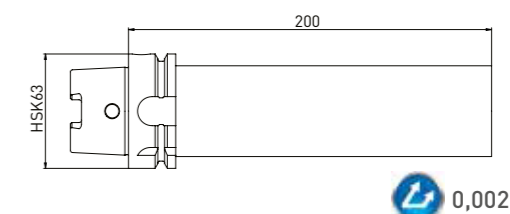
訂單號	名稱
350090030	Haas/Walter內錐31.75專用測試角度盤

SK測試標準棒



訂單號	名稱
350090040	測試標準棒 SK50 x $\phi 50$ x 200

HSK測試標準棒



訂單號	名稱
350090050	測試標準棒 HSK63 x $\phi 50$ x 200