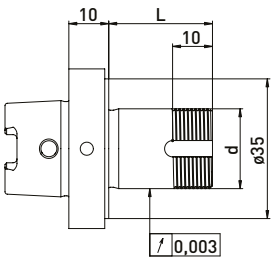
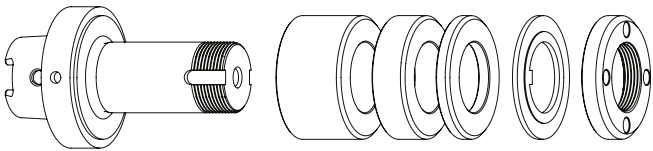


TTB HSK-F40 // Shaft ø20 mm // RS ø35 mm

For TTB tool grinding machines with ring set ø35 mm

GWA HSK-F40 // ø20 mm // RS ø35 mm



Delivered equipped:
Ring set ø35 mm, lock washer and clamping nut

Order No.	HSK	d	L	Ring set ø35 mm		
				B 20	B 10	B 4
300132012	HSK-F40	20	26	-	-	4
300132022	HSK-F40	20	42	-	2	3
300132032	HSK-F40	20	60	1	2	3

Accessories TTB grinding wheel adapter HSK-F40 // Shaft ø20 mm // Ring set ø35 mm

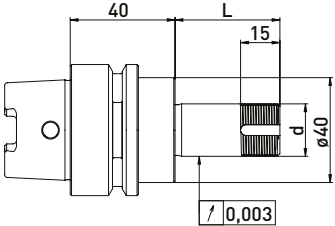
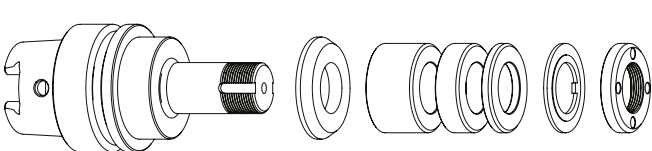
Order No.	Name	
350050050	Assembly device ø40	
350040010	Clamping nut wrench PC27 for ø20	
350040011	Clamping nut wrench PC27 for ø20	
350040040	*Clamping nut wrench PC29 for ø20 for clamping nut with blancing option	
350040041	*Clamping nut wrench PC29 for ø20	
350020081	*Balancing weight pair for clamping nut ø35 // 40gmm	

Order No.	Name	
350012020	Spacer ring ø35 x ø20 x 20	
350012010	Spacer ring ø35 x ø20 x 10	
350012004	Spacer ring ø35 x ø20 x 4	
350030020	Lock washer ø35 x ø20 x 2	
350020030	Clamping nut ø35 x 6 M20 x 1 PC27	
350020080	*Clamping nut with balancing option ø35 x ø40 x 8 x M20 x 1 PC29	
350015005	Support washer ø35 x ø60 x ø20 x 6	

Vollmer HSK50 // Schaft ø20 mm // RS ø35 mm

For Vollmer VGRIND tool grinding machines with ring set ø35 mm

GWA HSK50 // ø20 mm // RS ø35 mm



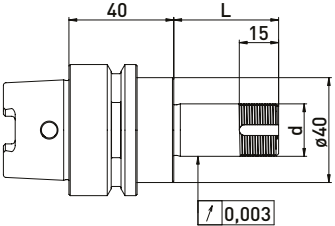
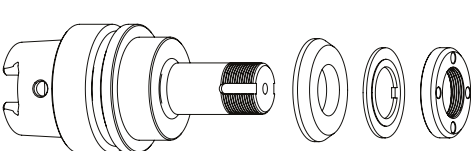
Delivered equipped:
Reducing washer, ring set ø35 mm, lock washer and clamping nut

Order No.	HSK	d	L	Ring set ø35 mm		
				B 20	B 10	B 4
300012512	HSK50	20	40	-	1	3
300012522	HSK50	20	60	1	1	3
300012532	HSK50	20	75	1	2	4
300012542	HSK50	20	85	2	1	4
300012552	HSK50	20	100	2	3	3

Accessories Vollmer grinding wheel adapter HSK50 // ø20 mm // Ring set ø35 mm

Order No.	Name	
350050010	Universal assembly device ø50	
350040010	Clamping nut wrench PC27 for ø20	
350040011	Clamping nut wrench PC27 for ø20	
350040040	*Clamping nut wrench PC29 for ø20 for clamping nut with blancing option	
350040041	*Clamping nut wrench PC29 for ø20	
350020081	*Balancing weight pair for clamping nut ø35 // 40gmm	

GWA HSK50 // ø20 mm // without RS



Delivered equipped:
Reducing washer, lock washer and clamping nut

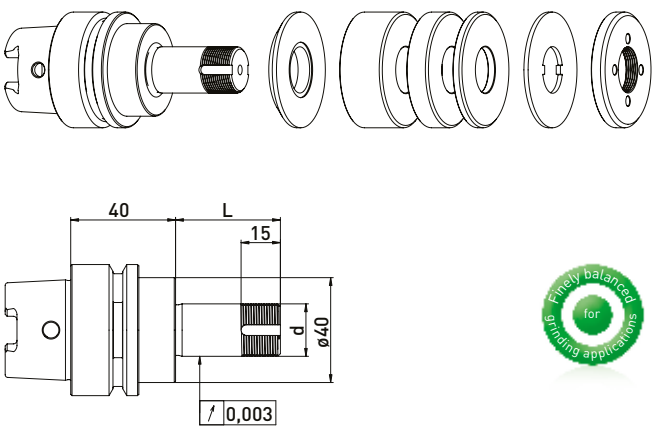
Order No.	HSK	d	L
300012511	HSK50	20	40
300012521	HSK50	20	60
300012531	HSK50	20	75
300012541	HSK50	20	85
300012551	HSK50	20	100

Order No.	Name	
350012020	Spacer ring ø35 x ø20 x 20	
350012010	Spacer ring ø35 x ø20 x 10	
350012004	Spacer ring ø35 x ø20 x 4	
350015006	Reducing washer ø40 x ø35 x ø20 x 6	
350030020	Lock washer ø35 x ø20 x 2	
350020030	Clamping nut ø35 x 6 M20 x 1 PC27	
350020080	*Clamping nut with balancing option ø35 x ø40 x 8 x M20 x 1 PC29	
350015005	Support washer ø35 x ø60 x ø20 x 6	

Vollmer HSK50 // Shaft ø20 mm // RS ø50 mm

For Vollmer VGRIND tool grinding machines with ring set ø50 mm

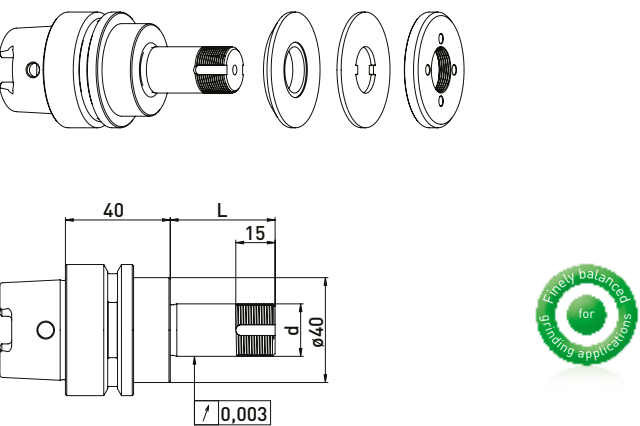
GWA HSK50 // ø20 mm // RS ø50 mm



Delivered equipped:
Reducing washer, ring set ø50 mm, lock washer and clamping nut

Order No.	HSK	d	L	Ring set ø50mm		
				B 20	B 10	B 4
300012012	HSK50	20	40	-	1	3
300012022	HSK50	20	60	1	1	3
300012032	HSK50	20	75	1	2	4
300012042	HSK50	20	85	2	1	4
300012052	HSK50	20	100	2	3	3

GWA HSK50 // ø20 mm // without RS



Delivered equipped:
Reducing washer, lock washer and clamping nut

Order No.	HSK	d	L
300012011	HSK50	20	40
300012021	HSK50	20	60
300012031	HSK50	20	75
300012041	HSK50	20	85
300012051	HSK50	20	100

Accessories Vollmer grinding wheel adapter HSK50 // ø20 mm // Ring set ø50 mm

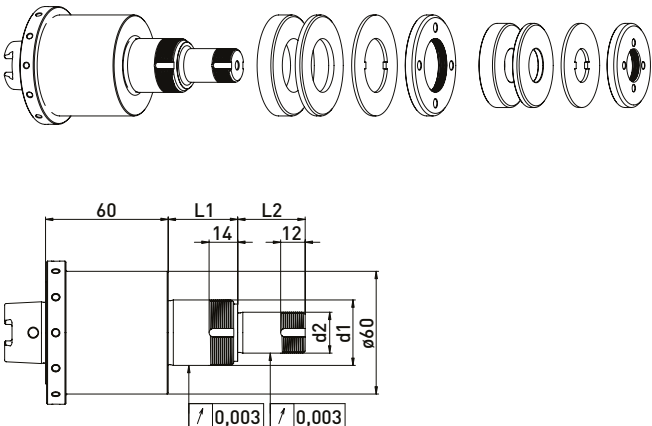
Order No.	Name
350050010	Universal assembly device ø50
350040010	*Clamping nut wrench PC27 for ø20
350040011	*Clamping nut wrench PC27 for ø20
350020021	*Balancing weight pair for clamping nut ø50 // 100gmm

Order No.	Name
350011020	Spacer ring ø50 x ø20 x 20
350011010	Spacer ring ø50 x ø20 x 10
350011004	Spacer ring ø50 x ø20 x 4
350015002	Reducing washer ø40 x ø50 x ø20 x 6
350030010	Lock washer ø50 x ø20 x 2
350020060	Clamping nut ø50 x 6 x M20 x 1 PC27
350020020	*Clamping nut with balancing option ø50 x 8,5 M20 x 1,0 PC27
350015003	Support washer ø50 x ø75 x ø20 x 6

Walter HSK40 // stepped Shaft ø20, ø32 // RS ø50 and ø60 mm

For Walter tool grinding machines with ring set ø50 and ø60 mm

GWA HSK40 // stepped ø20 ø32 mm // RS ø50 ø60 mm



Delivered equipped:
Ring set ø50 and ø60 mm, lock washer and clamping nut

Order No.	HSK	d1	d2	L1	L2	Ring set ø50 mm		Ring set ø60 mm	
						B 20	B 4	B 10	B 4
300103012	HSK40	32	20	34	33	1	2	1	2

Accessories Walter grinding wheel adapter HSK40 // stepped Shaft ø20, ø30 // RS ø50 and ø60 mm

Accessories ø50 mm

Order No.	Name
350011020	Spacer ring ø50 x ø20 x 20
350011010	Spacer ring ø50 x ø20 x 10
350011004	Spacer ring ø50 x ø20 x 4
350030010	Lock washer ø50 x ø20 x 2
350020060	Clamping nut ø50 x 6 x M20 x 1 PC27
350020020	*Clamping nut with balancing option ø50 x 8,5 M20 x 1,0 PC27
350020021	*Balancing weight pair for clamping nut ø50 // 100gmm
350040010	*Clamping nut wrench PC27 for ø20
350040011	*Clamping nut wrench PC27 for ø20

Accessories ø60 mm

Order No.	Name
350011320	Spacer ring ø60 x ø32 x 20
350011310	Spacer ring ø60 x ø32 x 10
350011304	Spacer ring ø60 x ø32 x 4
350030060	Lock washer ø60 x ø32 x 1,8
350020065	Clamping nut ø60 x 6 x M32x1 PC45
350040020	Clamping nut wrench PC45 for ø32